

Diving into Mastery – Diving

Adult Guidance with Question Prompts

Children should be able to use the vocabulary of o'clock and notice that the hour hand is the smaller hand and the minute hand is the longer hand. Children read time to the hour and recognise an o'clock time by the minute hand pointing to the 12.

What numbers can you see on a clock face?

Which is the longest hand?

Which is the shortest hand?

Which is the hour hand?

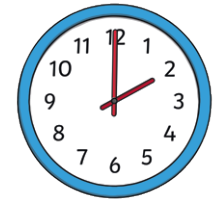
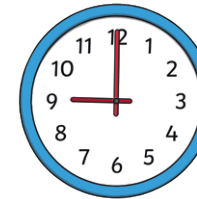
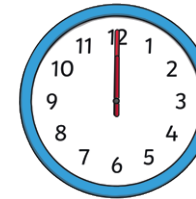
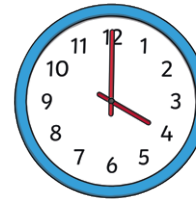
Which is the minute hand?

Can you show me _____ o'clock?

O'Clock Times



Match the times to the clocks and complete the sentences.

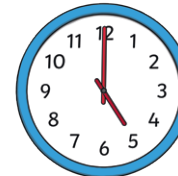


two o'clock

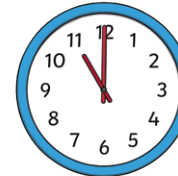
four o'clock

12 o'clock

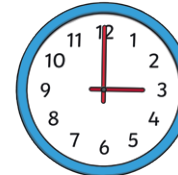
9 o'clock



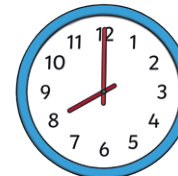
The time is _____ o'clock



The time is _____ o'clock



The time is _____ o'clock



The time is _____ o'clock

Diving into Mastery – Deeper

Adult Guidance with Question Prompts

Children read time to the hour and recognise an o'clock time by the minute hand pointing to the 12. They draw the hands of the clock, ensuring the hour hand is the smaller hand and the minute hand is the longer hand.

Which number is at the top of the clock face?

Which is the hour hand?

Which is the minute hand?

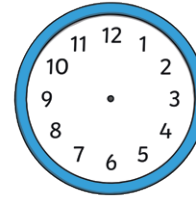
Where will the hour hand be at _____ o'clock?

Where will the minute hand be at _____ o'clock?

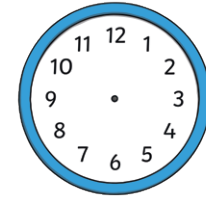
O'Clock Times



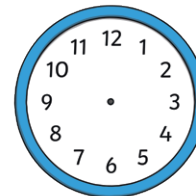
Draw the hour hand and minute hand on the clock faces to show the times.



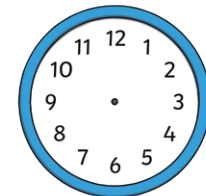
7 o'clock



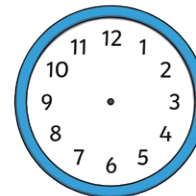
six o'clock



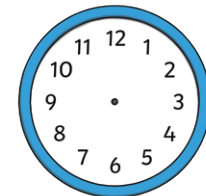
one o'clock



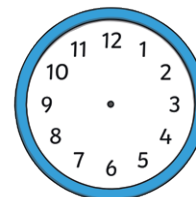
10 o'clock



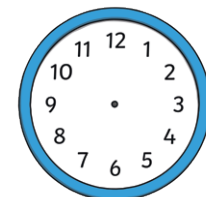
3 o'clock



four o'clock



five o'clock



12 o'clock

Diving into Mastery – Deepest Adult Guidance with Question Prompts

Children read time to the hour and recognise an o'clock time by the minute hand pointing to the 12 and the hour hand pointing to the hour. They recognise when the clock hands are the wrong way around and can explain where the hands should be.

How do you know which is the minute hand?

How do you know which is the hour hand?

Where will the hour hand be at _____ o'clock?

Where will the minute hand be at _____ o'clock?

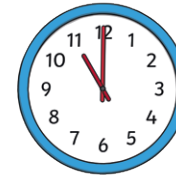
Can you show me the times Dolly should have drawn on the clock faces?

O'Clock Times



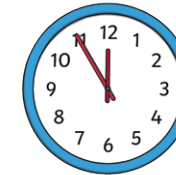
Here is Dolly's work. She has made some mistakes when drawing the clock hands. Tick her correct answers. Tick her correct answers.

1.



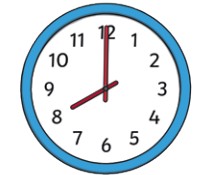
11 o'clock

2.



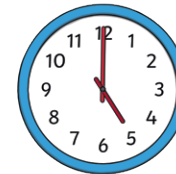
11 o'clock

3.



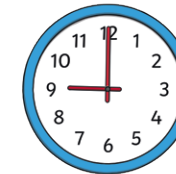
eight o'clock

4.



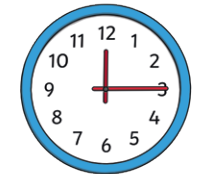
five o'clock

5.



9 o'clock

6.



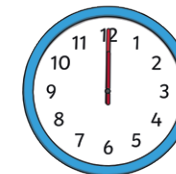
three o'clock

7.



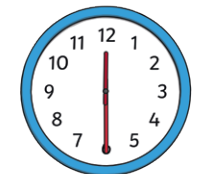
nine o'clock

8.



12 o'clock

9.



6 o'clock

Can you explain how Dolly might have made her mistakes?